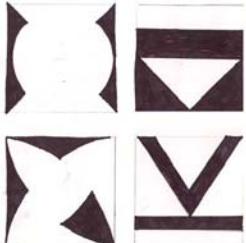


Developing a pattern gradation from a single unit form

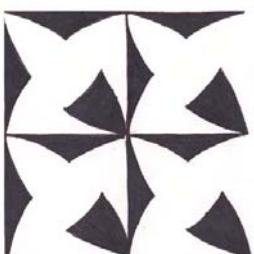


Create 4 unit forms based on a 2" x 2" square

Fill shapes with black or white

Erase all interior pencil lines


Lines



Select one of your 4 unit forms to be used in a 4" by 4" grid

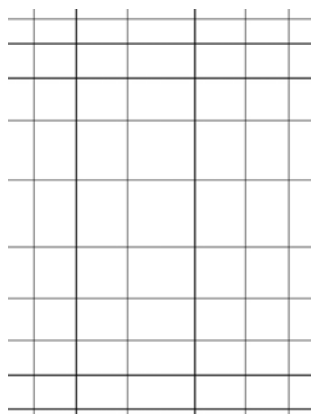
Each unit will be 2" by 2" square

Remember that no lines are allowed

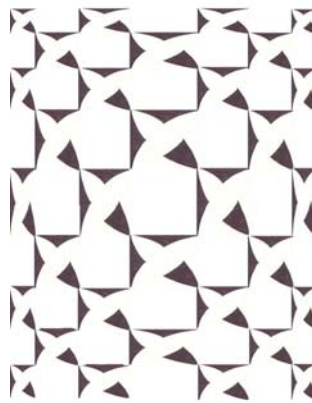


Use the same 4" by 4" grid, and the same unit, but this time alternate the black and white values of each unit

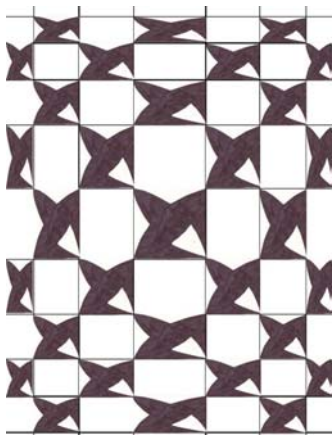
Positive/Negative Reversal



Lightly trace a gradated grid. See the pattern gradation worksheet for examples



You may work with a positive shape in every box, for this example I skipped every other box.



You might experiment with positive negative reversals



This example is a positive negative reversal in every box.